

Argyll and Bute Council
Comhairle Earra Ghaidheal agus Bhoid

Customer Services
Executive Director: Douglas Hendry



Kilmory, Lochgilphead, PA31 8RT
Tel: 01546 602127 Fax: 01546 604444
DX 599700 LOCHGILPHEAD
e.mail –douglas.hendry@argyll-bute.gov.uk

8 November 2012

NOTICE OF MEETING

A meeting of the **MID ARGYLL, KINTYRE AND THE ISLANDS COMMUNITY PLANNING GROUP** will be held in the **COMMUNITY CENTRE, CAMPBELTOWN WITH A VC FACILITY TO DALRIADA HOUSE, LOCHGILPHEAD, ISLAY SERVICEPOINT, JURA SERVICEPOINT AND COLONSAY SERVICEPOINT** on **WEDNESDAY, 5 DECEMBER 2012** at **2:00 PM**, which you are requested to attend.

Douglas Hendry
Executive Director - Customer Services

BUSINESS

1. **APOLOGIES**
2. **MINUTES OF THE PREVIOUS MEETING HELD ON 5 SEPTEMBER 2012**(Pages 1 - 8)
3. **ECONOMIC DEVELOPMENT ACTIVITY IN ARGYLL AND BUTE**
An update by Sandy Mactaggart, Executive Director of Development and Infrastructure Services.
4. **ECONOMIC DEVELOPMENT PLAN REFRESH - 2013-18**
An update by Ishabel Bremner Economy, - Development and Infrastructure Services
5. **UPDATE ON THE NEW COMMUNITY PLAN - EILEEN WILSON, IMPROVEMENT AND HR - TO FOLLOW**
6. **FEEDBACK FROM MANAGEMENT COMMITTEE ON THE AREA FORUM EVENTS - EILEEN WILSON IMPROVEMENT AND HR**

7. **FUTURE GOVERNANCE ARRANGEMENTS FOR CPP - EILEEN WILSON, IMPROVEMENT AND HR**(Pages 9 - 12)
8. **PUBLIC HEALTH SCREENING PROGRAMMES**
A report by NHS Highland (Pages 13 - 16)
9. **23 AND A HALF HOURS - VIDEO CLIP BY NHS HIGHLAND**
10. **PARTNERSHIP UPDATES**
 - (a) Strathclyde Fire and Rescue
 - Community Safety Partnership Working
 - Proposed Cooksafe Courses
 - SF & R Media and Festive Season/Winter Campaign
11. **COMMUNITY SAFETY PARTNERSHIP EXCEPTION REPORTING TO COMMUNITY PLANNING GROUP**(Pages 17 - 20)
12. **ISSUES RAISED BY COMMUNITY COUNCILS**
 - (a) Update on the development of the proposed Islands Forum
 - (b) Broadband Coverage and Mobile coverage
 - (c) IT and Broadband issues
13. **ISSUES RAISED BY THE THIRD SECTOR FORUM**

MID ARGYLL, KINTYRE AND THE ISLANDS COMMUNITY PLANNING GROUP

Councillor Anne Horn (Chair)

Councillor Donald Kelly (Vice-Chair)

Shirley MacLeod – Area Governance Manager

Contact: Theresa McLetchie - Tel: 01546 604511

**MINUTES of MEETING of MID ARGYLL, KINTYRE AND THE ISLANDS COMMUNITY
PLANNING GROUP held in the COUNCIL CHAMBERS, KILMORY, LOCHGILPHEAD, PA31
8RT
on WEDNESDAY, 5 SEPTEMBER 2012**

Present:

(Chair)

Councillor Anne Horn

Councillor Robin Currie

Councillor Donald Kelly

Councillor Donald MacMillan

Councillor Douglas Philand

Councillor Sandy Taylor

Shirley MacLeod

Area Governance Manager

Morag Brown

IOD Programme Manager

Chris Carr

IOD Project Officer

Audrey Baird

Community Development

Officer

Christina West

NHS Highland

Alistair MacGregor

ACHA

Yvonne Litster

ACHA

Bob Chicken

Tarbert & Skipness CC

Jane McKenzie

Scottish Water

Maryanne Stewart

AVA

Pat Dean

AVA

Ian Davidson Porter

BIDS

Islay

Glenmore Roberts

Islay CC

1. APOLOGIES

Apologies were intimated by:-

Councillor John Semple

Councillor Rory Colville

Councillor John McAlpine

Kate MacAulay (NHS)

Stuart Irvine East Kintyre CC

Glenn Heritage - AVA

The Chair welcomed everyone to the meeting and informed the group that Agenda Item 14 would be taken for consideration at the next CPG meeting, as no-one was in attendance to speak to the item.

Matters Arising

Councillor Currie raised further concerns in regards, in his opinion, the unsuitability of the GP surgery within the hospital in Bowmore. Christina West replied that this was contrary to patients assessment. She reiterated that additional car parking spaces had been made available and for patients coming by foot - the post bus was dropping off patients at the end of the hospital road. In addition, Islay and Jura Community Volunteer service had volunteer drivers who would provide transport for patients.

She requested that Councillor Currie put forward any other suggestions to herself or Islay Community council.

The Chair reported that several constituents had raised concerns to her in regards the lack of privacy in the examination rooms. Christina West advised the group that tenders had gone out for the provision of single-use clinic rooms under Phase 2 of developments at the hospital. She would get a timescale and update both the Community Planning group and Islay Community Council.

Glenmore Roberts stated that he had other healthcare issues to discuss with Christina and advised of a subsequent meeting of the Sub-committee which was scheduled for 18 October. She requested that this discussion take place off line and after the meeting.

The Chair affirmed the CPG was the direct mechanism for discussion of issues such as those brought forward and requested an update on the meeting come to both the next CPG and local Members are advised.

2. MINUTES OF THE PREVIOUS MEETING HELD ON 7 MARCH

The Minute of the last meeting held on 7 March was approved as a true and correct record.

3. ACHA UPDATE

Alistair MacGregor, Chief Executive, ACHA gave a detailed Powerpoint presentation detailing the Mid Argyll and Kintyre Investment Programme. Discussion continued after the presentation and encompassed the following issues:-

Timescale for work improvements -issues in regards contractors failing to complete within timescale and achieving targets
Figures on lists for affordable housing - acute housing challenges

Action: ACHA to provide details of housing lists to CPG

Councillor Kelly raised the issue of tenants requiring small repairs and questioned the revenue budget to remediate this. Alistair MacGregor replied that there was a huge demand for repairs and highlighted the additional costs which ACHA had over the past few severe winters in rectifying frost damage to their housing stock. Alistair stated that ACHA would endeavour to remediate these necessary repairs, but the ongoing constraints were momentous.

Christina West detailed issue whereby incoming NHS staff could not find affordable housing in the local area. Yvonne Litster replied that this policy was coming under review. Alistair MacGregor continued that this had been raised with the Scottish Government and it was envisaged that greater discretion and flexibility would be given to RSLs in regards to the provision of housing for incoming workers.

Christina West supported this initiative and detailed the integrity risk to local communities if this was not fully implemented.

Glenmore Roberts highlighted the problem on Islay of key workers being unable to obtain affordable housing. Alistair MacGregor reported of housing being built on Islay, but reiterated the similar demands throughout

the area.

The Chair thanked Alistair for his informative update. Councillor Currie requested that other local RSLs be invited to a future meeting

4. SCOTTISH WATER UPDATE

Jane McKenzie updated the group of the implementation of a 'Mini Argyll programme' - included in this was remedial work in Southend to deal with waters mains bursts in the area. New pipework covering an area of 2 km was being installed.

Councillor Currie reported on Scottish Water excavation works being carried out in Port Charlotte, directly after Argyll and Bute Council had undertaken surface dressing work. He stated the lack of co-ordination in synchronising these work programmes. In addition, he highlighted on-going problems at Machrie Hotel.

Jane replied that she had relayed this issue to the Water Asset planners and would update Councillor Currie as soon as she had news. She reiterated that Scottish Water did liaise with Argyll and Bute Council on planned work programmes.

Action: Scottish Water to update Islay CC and local Members in regards to the water issue at Machrie Hotel.

5. BUSINESS IMPROVEMENT DISTRICTS (BIDS)

Ian Davison Porter, Director BIDS gave a presentation to the group.

The Chair thanked Ian Davidson Porter for his informative presentation.

6. COMMUNITY PLAN - ARGYLL AND BUTE COUNCIL - EILEEN WILSON, IMPROVEMENT AND STRATEGIC HR

The group noted the report.

7. POPULATION DECLINE - EILEEN WILSON AND CHRIS CARR - ARGYLL AND BUTE COUNCIL, IMPROVEMENT AND STRATEGIC HR

Chris Carr gave a presentation to the group

Discussion ensued regarding the lack of young people taken into local Community Councils. Shirley MacLeod reported that the Community Council scheme would be reviewed in 2013.. The group agreed that their view be taken forward in regards entry onto Community Councils be more accessible for young people.

It was further agreed to invite a representative from Argyll College to attend a future CPG meeting

8. COMMUNITY RESILIENCE - MORAG BROWN, ARGYLL AND BUTE COUNCIL - IMPROVEMENT AND STRATEGIC HR

The group noted the report.

9. CO-PRODUCTION CONFERENCE

Maryanne Stewart informed the group that the Community Planning Management Group agreed on 16th August to take this initiative forward. The first Steering group meeting was scheduled for 7 September. Updates would be available on the Community website.

10. PARTNERSHIP UPDATES

Christina West provided an update in regards the recent successful engagement of a GP for Islay. Dr Kate Pickering would be based in Bowmore. However, the progression of appointing a GP to Jura had been unsuccessful. Plans had been formulated to meet with Jura Community Council to re-advertise the position.

A 'drop-in event' was scheduled for 27 June, whereby the local community would be updated on recent Health and Social Welfare issues. Councillor Currie raised some concerns in regards the location of the GP surgery for pedestrians within the hospital at Bowmore and questioned if NHS Highland would be sourcing alternative accommodation for the surgery. Christina West reported on the improvements made by NHS Highland in regards funding additional car parking provision at the hospital and reiterated that Derek Leslie, General Manager Argyll and Bute Community Health Partnership had not indicated that alternative accommodation would be sourced. She reported that the local community had affirmed that the present location was working well, but would take on board Councillor Currie's comments.

Glen Roberts, Convener Islay Community Council, questioned if any discussion on this issue had involved the new GP, Dr Kate Pickering. Christina West replied that further discussion would take place when Dr Pickering was in post.

Louise Logue and Maryanne Stewart reported that Survive and Thrive project is nearing its inception stage; all interviews have now been held and the Project Co-ordinator will be Lesley Anderson who joins from Islay and Jura CVS and has a background including working with Womens Aid and within the criminal justice system.

The work will complement that of existing agencies who are partners with ADA (Against Domestic Abuse) multi-agency Partnership and supports survivors of domestic abuse, women, children and men, in gaining greater emotional strength and well being through supports including the personal development course, STEPS to Excellence and support from other voluntary sector organisations across Argyll & Bute. The work also facilitates a 'joined up' approach to this support through multi-agency networks. Importantly, survivors will have choices available to them and additional options to support their future well-being. Importantly findings and experiences from this work should support and assist partner organisations to demonstrate need for their services giving a further dimension and feedback opportunity on which evidence based resources can be based.

Susan Paterson reported on funding issues in regards the Community Care Forum and changes within the Scottish Ambulance Service and the impact on passenger transportation.

Inspector Davidson reported on changes within Strathclyde Police's Senior Management structure. He informed the group of Chief Inspector's Baillie's recent temporary promotionary appointment and offered the group assurance of a replacement in the interim period.

He updated the group on the appointment of a new Detective Sergeant in Campbeltown.

Inspector Davidson had a copy of the Chief Constables' Annual report and detailed that the report was also available on the Strathclyde Police website.

Councillor McAlpine voiced concerns in regards the lack of police presence at Tarbert police station. Alistair Davidson replied that there was 1 permanent Strathclyde Police officer at Tarbert. However, the number of police vehicles had been rationalised, resulting in the fact that officers no longer had a dedicated vehicle. Provision and cover was still attributed to Tarbert from Lochgiphead Police station.

Councillor McAlpine requested that the situation be monitored.

Verina Litster advised that she was representing Andy McClure, Strathclyde Fire and Rescue. She reported that a new Area Commander had been appointed - Jim Scott would be based in Helensburgh and would be replacing Paul Connolly.

(a) **STRIVE TO SURVIVE PROJECT**

Pat Dean provided details of a STEPS to Excellence for Personal Success Course.

The course is taking place on 11th, 12th, 18th, 19th and is to be held at the Argyll Caravan Park and attendance would be required on all 4 days.

The contact is:-

Diana Mackenzie on 01586 554744 or email Diana@argyllvoluntaryaction.org.uk .

11. COMMUNITY SAFETY PARTNERSHIP EXCEPTION REPORTING TO COMMUNITY PLANNING GROUP

Bob Chicken enquired if issues in regards to - Alcohol and Drugs - would be included.

Action: Shirley MacLeod would find out and report back.

12. ISSUES RAISED BY COMMUNITY COUNCILS

(a) **UPDATE ON THE DEVELOPMENT OF THE PROPOSED ISLANDS FORUM**

Audrey Baird reported that progress was slow, but steady and suggested that the island Community Councils should perhaps attend future KIWG/MAP meetings to experience the issues discussed at their meetings.

Councillor Currie stated that the current CPG meeting was providing good interaction and discussion amongst the group.

13. ISSUES RAISED BY THE THIRD SECTOR FORUM

Maryanne Stewart would bring an update to the next meeting.

14. BROADBAND ISSUES - SCOTTISH GOVERNMENT REVIEW

In regards the broadband issue on Jura, Audrey stated that at Jura's request this item had been included on the Agenda. However, there was no representation from Jura to enter into any discussion.

Shirley MacLeod stated that Gerry Wilson would be invited to the next CPG meeting.

15. AREA FORUM EVENTS 2013

The group noted the report.

The Chair thanked the group for their attendance at the meeting and informative updates.

This page is intentionally left blank

**Argyll and Bute Community Planning
Partnership
Management Committee
17 October 2012**

Future Governance Arrangements for the CPP

1 SUMMARY

- 1.1 This report sets out proposals on future governance arrangements for the CPP.

2 RECOMMENDATIONS

- 2.1 The proposals on future governance are approved and a further report on detailed arrangements is prepared for the December meeting of the Management Committee.

3 DETAIL

- 3.1 A report was submitted to the August meeting of the CPP Management Committee proposing a review of the governance arrangements for the CPP given that a new community plan was being developed. The CPP Management Committee agreed that a more detailed paper be brought to the October meeting of the CPP Management Committee for consideration.
- 3.2 The overall role of the CPP is extensive. The policy agenda for community planning is developing nationally, there are extensive commitments in the Community Plan which is being revised etc etc. It is important that an appropriate support structure is part of plan to ensure effective governance of community planning.
- 3.3 The benefit of community plan is the overall impact of partners activities is partnership working is greater than the impact of partners working individually. In addition the community planning should ensure communities are at the center of decision making and planning.
- 3.4 The statement of ambition arising from the national review of community planning sets out the following as key aspects of community planning:
- What Community Planning Partnerships must do
 - Understanding place:
 - Planning for outcomes:
 - Delivering outcomes:
 - How Community Planning Partnerships should operate
 - Organising for Outcomes
 - Accountability for Outcomes
 - How Community Planning Partnerships should improve outcomes
 - Reporting Outcomes

- 3.5 The activities of the CPP can be broken down into the following:
- Strategic oversight of community planning.
 - Developing the community plan to set the overall direction for community planning partners in Argyll & Bute.
 - Policy development across community planning partners that support the delivery of the community plan.
 - Engaging with communities to understand their needs and requirements and also to inform and consult on issues relating to the CPP.
 - Responding / reacting to national policy developments.
 - Effective working across community planning partners.
 - Continuous improvement in the effectiveness of the CPP.
 - Performance management to ensure delivery of the community plan.
 - Reporting performance to the public.
- 3.6 The Full Partnership of the CPP should be retained as the body responsible for overall development of community planning in Argyll & Bute. No change is proposed to the membership of the Full Partnership of the CPP. Meetings should continue to take place 3 times each year in line with current arrangements.
- 3.7 Argyll & Bute is a large and diverse area. Each of our communities can have different issues even within the overall umbrella of a community plan for the whole area. It is important that there continues to be effective governance over the CPP at a local level. It is proposed to retain the existing Area Community Planning Groups to discharge this function. The Area CPGs would meet quarterly. The role of Area CPGs would be:
- Engaging with communities to understand their needs and requirements and also to inform and consult on issues relating to the CPP at an area level.
 - Effective working across community planning partners at an area level.
 - Continuous improvement in the effectiveness of the CPP at an area level.
 - Performance management to ensure delivery of the community plan at an area level.
- 3.8 Ensuring there is effective engagement, joint working, policy development, planning and prioritisation and performance management is a key role. It is suggested this requires a degree of focus that would benefit from a group of outwith the Full Partnership of the CPP. It is proposed that this role is carried out by and becomes the main focus of the Management Committee. The Management Committee would meet on a quarterly basis. The proposed role of the Management Committee is set out below.
- Strategic oversight of community planning at a strategic level.
 - Developing the community plan to set the overall direction for community planning partners in Argyll & Bute at a strategic level.
 - Policy development across community planning partners that support the delivery of the community plan at a strategic level.
 - Engaging with communities to understand their needs and

requirements and also to inform and consult on issues relating to the CPP at a strategic level.

- Responding / reacting to national policy developments at a strategic level.
- Effective working across community planning partners at a strategic level.
- Continuous improvement in the effectiveness of the CPP at an area level.
- Performance management to ensure delivery of the community plan at a strategic level.
- Reporting performance to the public

3.9 It is proposed the current thematic groups would cease to exist. The role of the thematic groups would effectively be subsumed into the Management Committee. The new community plan will be based on objectives, outcomes and actions. It is proposed that there is a nominated lead for each outcome. The outcome leads would have responsibility for managing and reporting on that outcome across the whole CPP. It is anticipated multiple partners would contribute to each outcome. There would be a series of actions contributing to each outcome. Each partner would nominate a lead for each of their actions. This would provide a clear line of sight for each of the partners contribution to the community plan and its outcomes.

3.10 A CPP Chief Officer Group should be established. The CPP COG would have a dual role. One role would be to make real/action/operationalise the actions and activities agreed by the Management Committee to underpin effective delivery of the community plan – accountable to the Management Committee. The second role would be related to continuous improvement identifying and taking forward opportunities for collaboration, joint working and shared service at a strategic level – accountable to the Full Partnership. This would address the following key aspects of community planning:

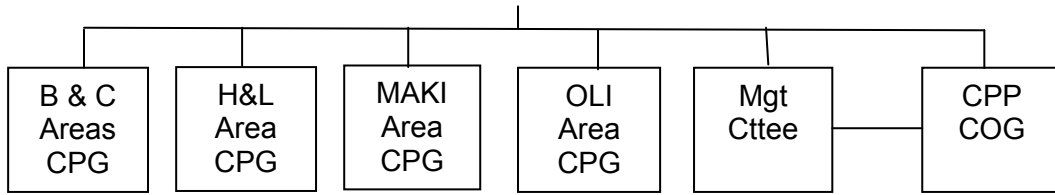
- Effective working across community planning partners.
- Continuous improvement in the effectiveness of the CPP.
- Performance management to ensure delivery of the community plan

A report would be prepared for the Management Committee and Full Partnership following each meeting of the CPP COG. When urgent issues fall out with the cycle of meetings the Full Partnership and Management Committee the CPP COG would action these and report back to the relevant group. It is envisaged meetings would take place every 2 months.

3.11 All groups will report to the full partnership. CPP COG will also report to the Management Committee. The minutes or a report of group meetings will be submitted to the full partnership. The full partnership can call in for consideration any issue considered by the groups. The full partnership can also delegate or direct the groups to consider a particular matter.

3.12 The proposed governance structure would be as follows:





3.12 If the CPP management committee is content with this overall approach then further details including a proposed meeting schedule, membership and chairing arrangements can be developed.

For further information contact: Bruce West, Head of Strategic Finance, Argyll and Bute Council

Telephone 01546 604151

HEALTH IMPROVEMENT

Elaine C Garman, Public Health Specialist

The MAKI Community Planning Group is asked to:

- Note this paper

1 Background and Summary

This paper focuses on health screening programmes. Cervical screening is subject to a government target.

2 Bowel Screening

Table 1: Uptake of bowel screening by Community Health Partnership (CHP), 2010

	Overall	Men	Women
North Highland CHP	60.1%	55.7%	64.7%
Mid Highland CHP	58.7%	54.4%	63.1%
South East Highland CHP	58.4%	54.8%	61.9%
Argyll & Bute CHP	59.1%	55.3%	62.7%

Source: Based on data provided by the Scottish Bowel Screening Centre

Uptake across Scotland during the period November 2008 – October 2010 was 53.7%. In Highland, uptake among women was higher than that among men (63.4% vs. 55.1%), a pattern seen across the country – 57.2% vs. 50.0% among women and men respectively during the period November 2008 – October 2010.

Uptake also varies by deprivation. Deprivation among geographical communities is assessed using the Scottish Indices of Multiple Deprivation (SIMD). Communities are assigned to an SIMD quintile based upon their degree of deprivation. In NHS Highland as a whole among men and women combined, uptake among people living in our most affluent communities exceeded that among our most deprived communities (65.2% vs. 47.1%), a pattern that that is also seen across Scotland (62.7% vs. 41.6%).

Table 2: Pre-colonoscopy assessment

North NHS Highland (1 st December 2009 – 31 st October 2010)	
Number of pre-colonoscopy assessment appointments	538
Proportion of patients whose offered appointment date for pre-colonoscopy assessment is within 14 days of the NHS Board being notified by the Scottish Bowel Screening Centre (Target 80%)	75.1%
Argyll & Bute CHP (1 st April 2009 – 31 st March 2011)	
Number of pre-colonoscopy assessment appointments	406
Proportion of patients whose offered appointment date for pre-colonoscopy assessment is within 14 days of the NHS Board being	41.3%

notified by the Scottish Bowel Screening Centre (Target 80%)	
Scotland (1st November 2008 – 31st October 2010)	
Proportion of patients whose offered appointment date for pre-colonoscopy assessment is within 14 days of the NHS Board being notified by the Scottish Bowel Screening Centre (Target 80%)	67.1%

Source:

- North NHS Highland information: ISD Scotland.
- Argyll & Bute CHP information: NHS Greater Glasgow & Clyde Public Health Screening Unit.

Pre-colonoscopy assessment appointments are carried out by a Specialist Nurse based within NHS GGC for A&B residents. Pre-colonoscopy assessment appointments provide an opportunity to assess individuals' fitness for colonoscopy and to discuss any questions which they have.

Pre-colonoscopy assessment appointments are usually conducted over the 'phone. However, face-to-face appointments can be arranged for individuals wishing this.

For the majority of individuals, the date, time and venue for their colonoscopy is arranged, and subsequently confirmed by letter.

Since this reporting period there have been staffing increases in NHS GGC providing more capacity within the system. However there also appears to be delays in getting bowel preparation to patients which is being investigated.

3 Breast Screening

Breast screening is undertaken by the West of Scotland Breast Screening Service. This is provided by a mobile service and visits all parts of Argyll and Bute over a three year period. For the cycle ending at March 2011 the overall uptake rate in the CHP was 76% with a range of between 72% - 80%. There is currently a consultation underway to rationalise the use of mobile units in Scotland as a whole and the number of assessment centres with the desire to combine assessment centres for screening and symptomatic patients. In Argyll and Bute there are 11 sites that are used by the mobile service.

4 Cervical Screening

Table 3: Uptake Rates - proportion of eligible ¹ women who have had a cervical screening test within the last 5 years

	Uptake Rates (%)											
	Q4 2008	Q1 2009	Q2 2009	Q3 2009	Q4 2009	Q1 2010	Q2 2010	Q3 2010	Q4 2010	Q1 2011	Q2 2011	Q3 2011
Highland	80.6	81.1	81.2	81.3	81.1	81.0	80.8	80.5	80.5	80.6	80.5	80.4
North CHP	83.4	83.7	83.6	83.4	83.1	82.6	82.3	82.1	81.7	81.4	81.4	81.1
Mid CHP	80.6	81.1	81.4	81.5	81.3	81.3	81.0	80.8	80.6	80.6	80.3	80.0
South East CHP	80.9	81.2	81.5	81.5	81.3	81.3	81.1	80.8	80.9	81.2	81.2	81.1
Argyll & Bute CHP	79.1	79.7	79.8	79.9	79.9	79.8	79.6	79.3	79.4	79.6	79.5	79.5
National Target	80.0	80.0	80.0	80.0	80.0	80.0	80.0	80.0	80.0	80.0	80.0	80.0

Data Source: Cytology Practitioner Achievement Notification (CPAN) data from Scottish Cervical Call Recall System (SCCRS)

¹ Eligible women = aged 21-60 years inclusive, all with a cervix

N.B. numerator and denominator values can be provided on request (contact: r.henderson@nhs.net)

Table 4: Defaulting Rates - proportion of eligible ¹ women who have not taken up an invitation to have a cervical screening test after receiving reminders

	Defaulting Rates (%)											
	Q4 2008	Q1 2009	Q2 2009	Q3 2009	Q4 2009	Q1 2010	Q2 2010	Q3 2010	Q4 2010	Q1 2011	Q2 2011	Q3 2011
Highland	18.1	17.0	15.7	14.8	16.9	18.6	19.3	17.4	15.2	14.3	15.0	16.2
North CHP	16.2	15.4	14.6	13.6	15.5	16.9	16.9	15.1	13.9	13.3	14.8	15.4
Mid CHP	19.2	16.7	15.3	14.4	17.2	19.1	19.8	18.0	16.1	15.2	16.2	17.3
South East CHP	17.5	16.6	15.2	14.4	16.4	18.3	19.1	17.2	15.0	14.1	14.2	15.5
Argyll & Bute CHP	18.7	18.4	17.3	16.3	17.7	19.0	20.1	17.9	15.1	13.9	14.8	16.2

Data Source: Cytology Practitioner Achievement Notification (CPAN) data from Scottish Cervical Call Recall System (SCCRS)

¹ Eligible women = aged 21-60 years inclusive, all with a cervix

N.B. numerator and denominator values can be provided on request (contact: r.henderson@nhs.net)

5 Diabetic Retinopathy Screening

All patients diagnosed with diabetes are offered to have their eyes screened for any problematic changes which may threaten their eye sight in the long term. This service is provided through High Street Optometrists or a mobile service working out of GP practices or community hospitals. The uptake rate across Argyll and Bute is 72%. In the MAKI area the rates vary from 87% uptake in Port Charlotte to 22% on Jura.

Table 5: GP Practice Uptake Rates for Diabetic Retinopathy Screening

GP Practice	% Uptake Rate
Port Charlotte	87
Bowmore	83
Campbeltown	82
Port Ellen	74
Carradale	65
Jura	22

6 Abdominal Aortic Aneurysm Screening

This year sees the introduction of a national AAA screening programme. NHS Highland will be the first to implement the programme which will be phased in across the Board areas. North Highland has an existing programme which was migrated to the new national system during June 2012 with the first of the new clinics held at the end of the month. The programme will see 65 year old men and any who are older who wish to self refer. The procedure is carried out by ultrasound and patients will not be seen again if the screen is negative. If an aneurysm is found, dependent on its size, patients will either be referred to vascular services in Glasgow or followed up by the screening service at agreed intervals and appropriate health promotion advice. Argyll and Bute will use its existing radiographers to deliver this programme along with healthcare support workers. The service will visit eight different centres at the rural general hospital, community hospitals or integrated care centres and will start in November this year.

Elaine C Garman
Public Health Specialist

2nd November 2012

This page is intentionally left blank

ARGYLL & BUTE COUNCIL
Mid Argyll Kintyre and the Islands CPG**CUSTOMER SERVICES****6 November 2012**

Community Safety Partnership Exception reporting to Area Community Planning group

1. SUMMARY

- 1.1 The purpose of this Paper is to advise the Area Community Planning group of the main tasks undertaken by members of the Community Safety Partnership working which have taken place in the last few months

2. RECOMMENDATIONS

Area Community Planning Group Members:

- 2.1 Note the highlight/ exception reports provided.
- 2.2 Consider whether there are any specific areas of work which the ACPG wishes the Community Safety Partnership to consider developing further.

3. DETAIL

- 3.1 Each Area Community Safety Forum works to the goals of the Argyll and Bute Community Safety Partnership and while there is considerable commonality in the work undertaken in each area, there is also a level of diversity due to local issues and opportunities

The table below at appendix 1 is the exception report for the Mid, Argyll Kintyre and the Islands Community Safety partnership group since the last meeting and provides an indication of the work undertaken recently. The exception report an exhaustive listing of the community safety works being undertaken by each group or partner and further detail re most topics can be made be available if requested

The Chair of this Group until recently was Chief Inspector Marlene Baillie. She has now been succeeded by Cllr Horn as Chair and Chief Inspector Pettigrew as Vice Chair

4. IMPLICATIONS

- | | | |
|-----|-------------------------------------|--|
| 4.1 | Policy | Demonstrates compliance with a section of the SOA objectives |
| 4.2 | Financial | None, |
| 4.3 | Personnel | None |
| 4.4 | Equalities Impact Assessment | None. |
| 4.5 | Legal | None |

For further information, please contact Shirley MacLeod, Area Governance Manager tel 01369 707134

Mid Argyll Kintyre and Islay Community Safety Forum Exception Report				
Theme	Community Safety Outcome'	Issue and Actions	Comment	Outcomes/ Indicators
<p>Personal and Home Safety</p> <p><i>Considers the safety of the individual in areas such as accident prevention, online safety, fire safety, home security, bogus and scam callers</i></p>	<p>Camping Caravanning Summer safety initiative</p>	<p>This initiative Now complete and successful. It has been superseded by the annual Autumn Bonfire safety campaign.</p>	<p>This year the Bonfire campaign is concentrated on areas where there are no organised events since these carry a higher risk. Council supported this initiative by putting posters up and loading materials on Website.</p>	<p>Successful outcome will be a lowering of accidents</p>
<p>Travel Safety</p> <p><i>Includes issues that and individuals may encounter such as pedestrian safety, road traffic accidents, water safety, public transport safety</i></p>	<p>Water safety – kayak launching and equipment</p> <p>Minimise effect of “nuisance vehicles”</p>	<p>Concerns raised by RNLI Re known Kayak launch sites</p> <p>Police are proactively monitoring this as an ASB issue in C'town specifically</p>	<p>Forum has approved budget spend for temporary signage highlighting location of launch points and their safe usage for next season</p> <p>Will expand to other areas of required by reporting</p>	<p>Creation of the signs</p> <p>Incidents of “anti-social driving “ reduced</p>
<p>Safety of Vulnerable Groups</p> <p><i>Deals with issues in relation to individuals or groups who may be vulnerable including elderly people, young children, victims of hate crime and sexual violence</i></p>	<p>TESSA</p> <p>Referral Partnership</p> <p>Bogus traders</p>	<p>Update to be given to next meeting</p> <p>SFR are seeking to set up a process whereby agencies, as a matter of course seek consent to pass data to allow a home safety visit</p> <p>Police and Trading standards worked together successfully to prosecute a gang who were working in the area mid argyll area</p>	<p>It was suggested that this be progressed by developing a less formal promotional leaflet that could be distributed by the various partner and third sector agencies introducing the concept and what the requestor can received – also a to be sought willing to promote the concept in the local paper</p> <p>. This result came about partly because of the vigilance of an individual who realised something was amiss with the scenario of the group of men “working” for an elderly neighbour</p>	
<p>Environment Safety</p> <p><i>Environment safety concerns the aesthetics of communities and neighbourhoods and includes vandalism and criminal damage, graffiti, fly tipping, littering, dog fouling</i></p>	<p>Minimise criminal damage/crime against persons/property</p>	<p>Kintyre crime prevention panel now working with the Forum</p>		

<i>and secondary fires</i>				
<p>Public Space Safety <i>This deals with people's safety in their communities and public perception of safety including anti social behaviour, public disorder and violence.</i></p>	ASB	Group continues to Meet its objectives main participants are police, RSLs and Council		

This page is intentionally left blank